

Holdings

A Modern Estate Agent



56 Loweswater Drive, Loughborough, LE11 3RS

£269,000

A beautifully presented three-bedroom home in a highly sought-after location, offering bright and spacious living throughout. With a modern kitchen, open-plan reception space, and a private garden, this property is perfectly suited to first-time buyers, families, or investors alike.

Summary

This well-presented home is entered via a front porch leading into a bright and airy entrance hall, enhanced by windows at both the top and bottom of the staircase. The hallway also benefits from a useful storage cupboard and provides access to the lounge and kitchen.

The lounge features a charming corner fireplace and flows seamlessly into the dining room, creating an ideal space for both relaxing and entertaining. The dining area is further complemented by recently installed double glazed French doors opening onto the rear garden. The contemporary kitchen is well-appointed with stylish cabinetry, a built-in dishwasher, under-cabinet lighting, a useful storage cupboard, and an external door providing side access.

To the first floor, there are three well-proportioned bedrooms. The principal rear bedroom is generously sized, comfortably accommodating a king-size bed, and includes a built-in cupboard housing the modern combi boiler. A further bedroom overlooks the front and is ideally suited as a single bedroom or home office.

The accommodation is completed by a family bathroom, fitted with a bath and shower over, wash hand basin with vanity unit, and W.C.

Externally, the property enjoys a generous plot with a front garden, a block paved driveway running along the side of the property, and a low-maintenance rear garden. A detached garage provides additional storage or parking.

Ideally located, Loweswater Drive offers excellent access to Forest Road and Nanpantan Road, and is conveniently situated for Holywell Primary School and Loughborough University. The area also benefits from a nearby children's play park and scenic walks leading to Burleigh Woods.

Disclaimer

1. Intending purchasers will be asked to produce identification documentation.

2. While we endeavour to make our sales particulars fair, accurate, and reliable, they are only a general guide to the property.

3. The measurements indicated are supplied for guidance only and, as such, must be considered incorrect.

4. Please note we have not tested the services or

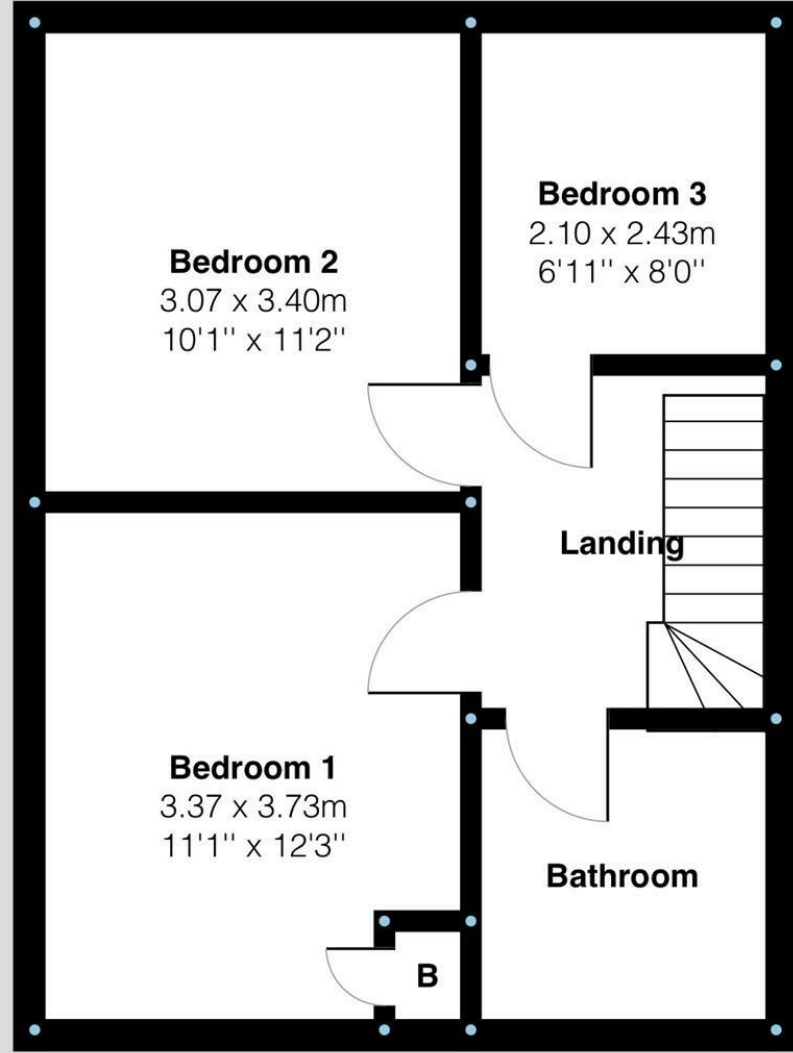
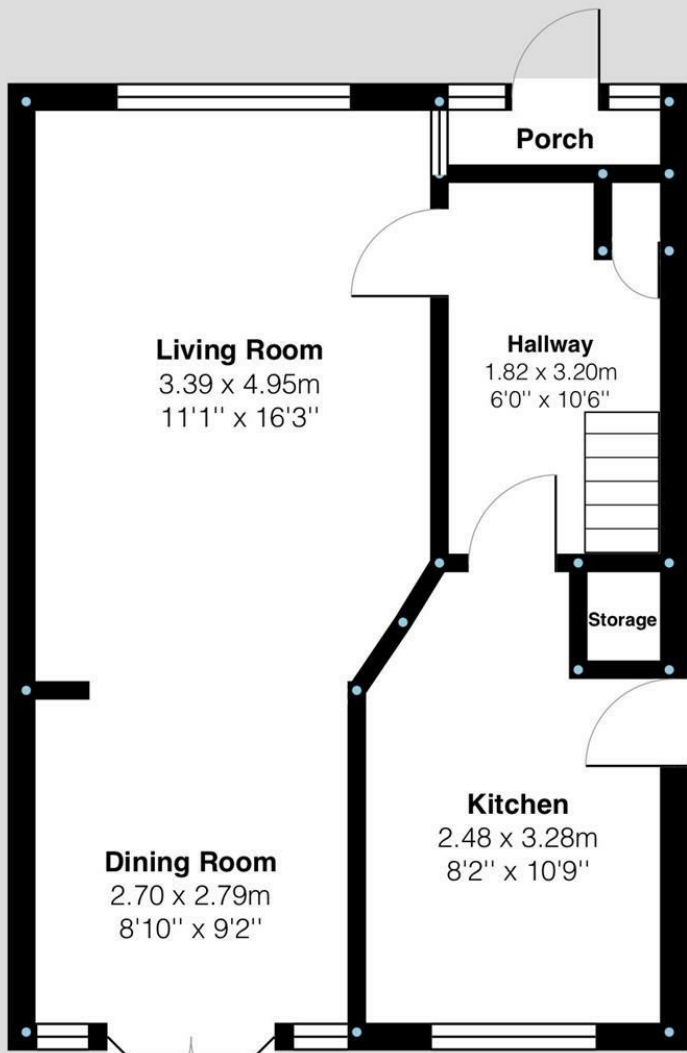
any of the equipment or appliances in this property; accordingly, we strongly advise prospective buyers to commission their survey or service reports before finalising their offer to purchase.

5. These particulars are issued in good faith but do not constitute representations of fact or form part of any offer or contract. The matters referred to in these particulars should be independently verified by prospective buyers. Neither Holders Estate Agents nor its agents have any authority to make or give any representation or warranty concerning this property.

Extra Information

To check Internet and Mobile Availability please use the following link: checker.ofcom.org.uk/engb/broadband-coverage To check Flood Risk please use the following link: check-long-term-flood-risk.service.gov.uk/postcode

Floor Plan



Area Map



Energy Efficiency Graph

Energy Efficiency Rating		Current	Potential
Very energy efficient - lower running costs			
(92 plus) A			87
(81-91) B			
(69-80) C			
(55-68) D		73	
(39-54) E			
(21-38) F			
(1-20) G			
Not energy efficient - higher running costs			
England & Wales		EU Directive 2002/91/EC	

These particulars, whilst believed to be accurate are set out as a general outline only for guidance and do not constitute any part of an offer or contract. Intending purchasers should not rely on them as statements of representation of fact, but must satisfy themselves by inspection or otherwise as to their accuracy. No person in this firm's employment has the authority to make or give any representation or warranty in respect of the property.